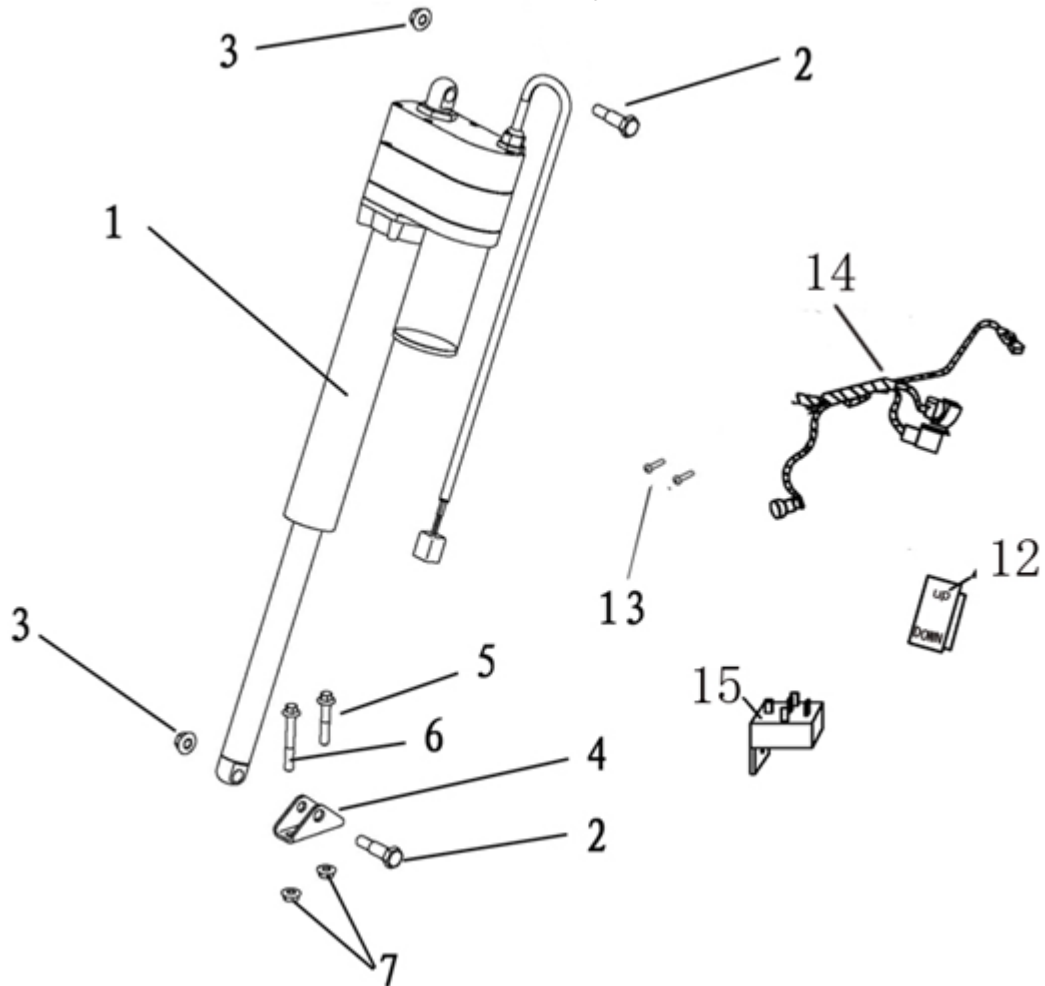


## INSTALLATION INSTRUCTIONS

Contains the following parts:



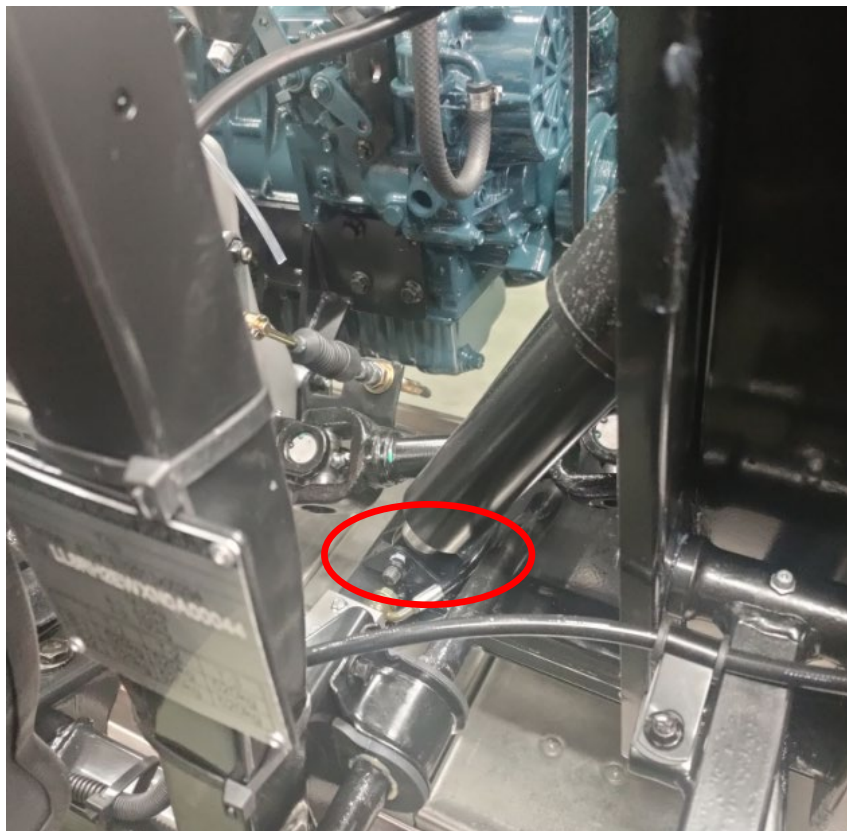
REF. No.	DESCRIPTION	Q'TY
1	After the container electric push rod assembly	1
2	Shoulder Bolt M10×1.25×45	2
3	Nut M10	2
4	The supporting seat is arranged under the electric putter	1
5	Hexagon Flange Bolt M8×45	1
6	Hexagon Flange Bolt M8×60	1

7	Prevailing Torque Type All-metal Hexagon Nut Fine Pitch M8	2
12	Lift switch	1
13	Cross Recessed Pan Head Screw M5×16	2
14	Lift control cable	1
15	fan realy	2

### Installation steps:

#### 1. Install the part 1

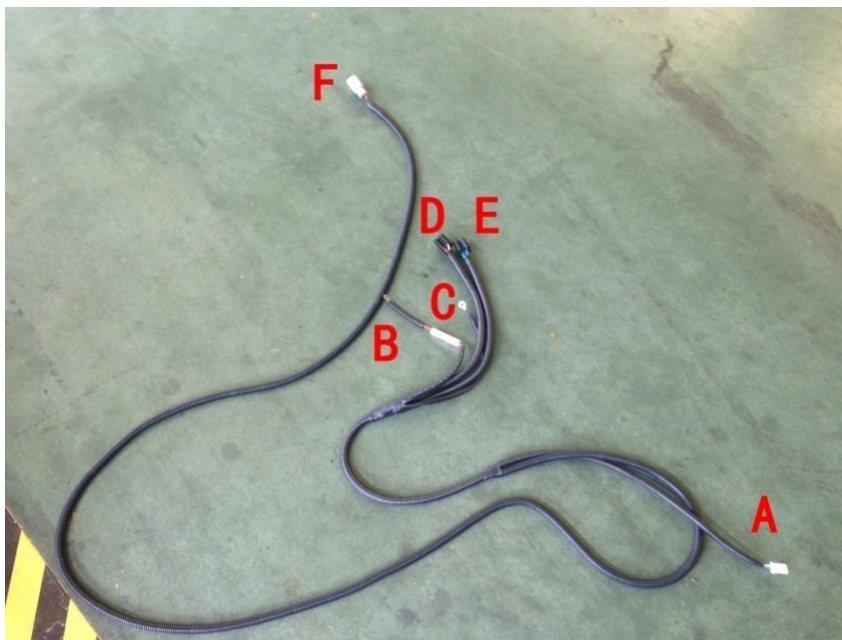
The upper end is arranged on the iron container, and the lower end is mounted on the frame.



#### 4. Install switch and cable

The switch is installed on the control panel.

A-G connected





Find the main cable backup interface K

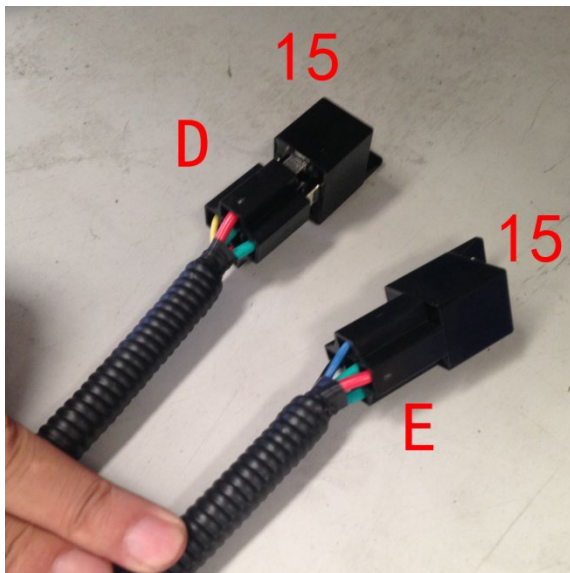
H-K connected



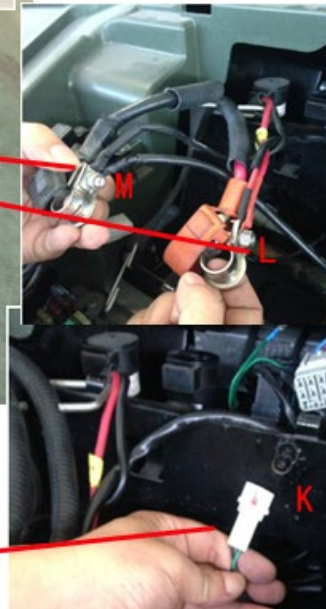
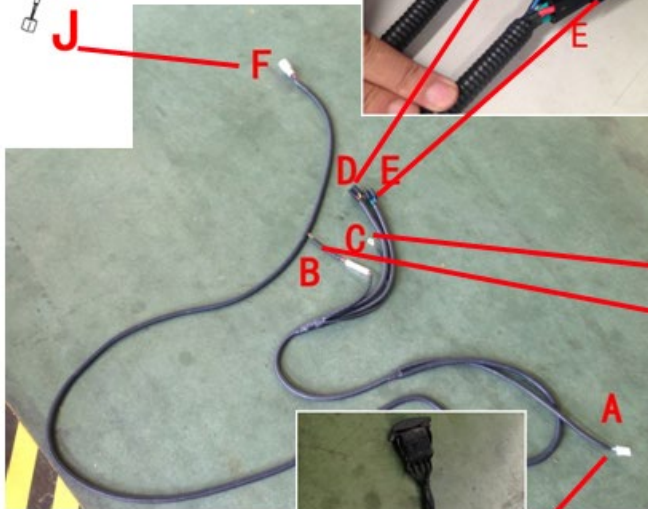
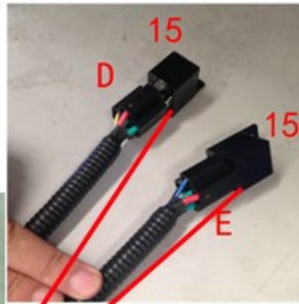
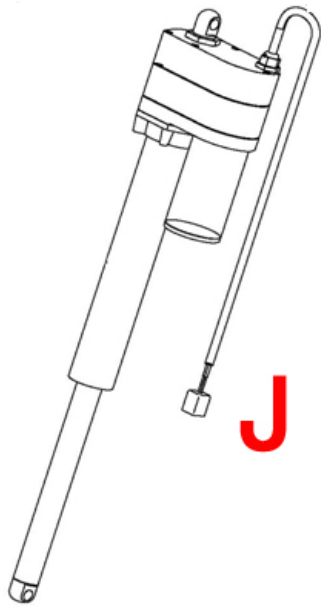
B-L connected

C-M connected





F-J connected



Note: customers to arrange cable line.